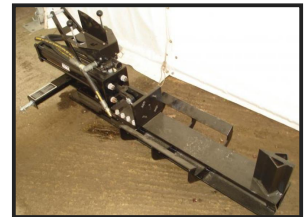
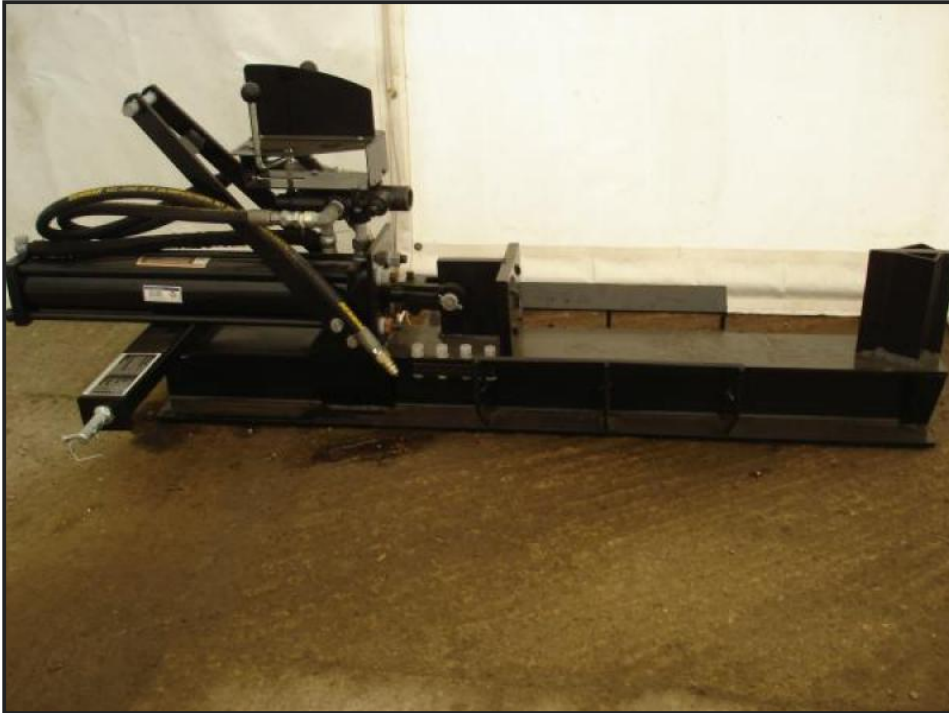


Horizontal 3 Point linkage mounted log splitter



£POA

Horizontal 3 Point linkage mounted log splitter with 14 Tonne splitting pressure, Single lever control valve,
Splits up to 24" (100lb) logs.

Product Details	
Category/Type	Machinery
Make	Horizontal
Model	3 Point linkage mounted log splitter
Year	-
Hours	-

Fleet Lane, Bredon, Tewkesbury, Gloucester, GL20 7EF

Tel: +44 (0)1684 772912

www.pandengineering.com info@pandeng.co.uk